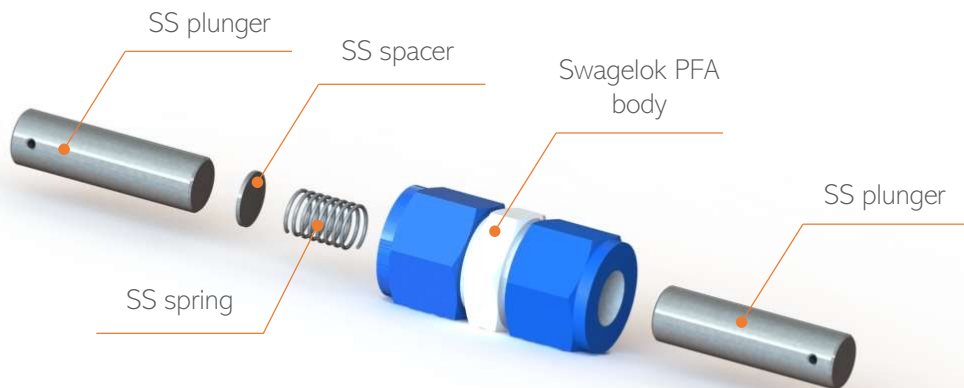


Swagelok type cell: two electrodes

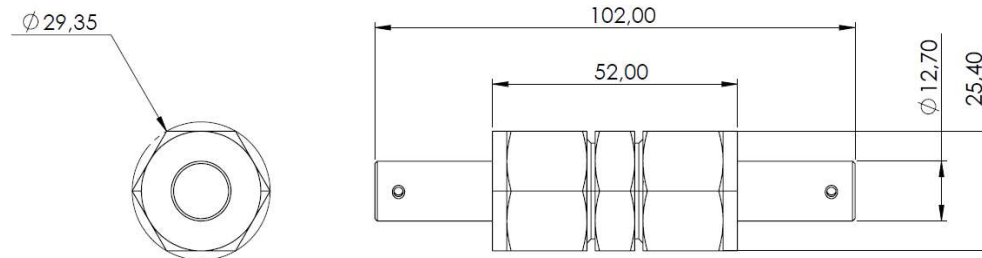


Specification

Component	Material	Dimensions
Plungers	Stainless steel SS316L	Ø 12.7 mm x 45 mm
Spring	Stainless steel SS316L	Ex Ø 11 mm x 15.5 mm
Spacer	Stainless steel SS316L	Ø 12.7 mm x 1 mm
Body	PFA (or SS316L*)	--

* Cells with SS316L body require Mylar electrical insulation film

Cell dimensions



Features

- Compact design
- Quality materials (stainless steel 316, PTFE)
- Ease of assembly and disassembly
- Easy recovery of electrodes after experiments
- Easy component cleaning

